

Living Better Comes Naturally in Scenic Peach County

In Peach County you'll also discover an inviting atmosphere enhanced by historic districts that give our towns architectural character and charm.

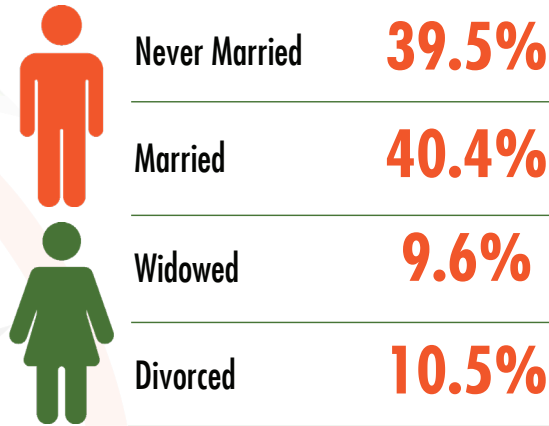
Enjoy great healthcare along with great schools and educational opportunities in a community that's as warm as the Southern sun, with more fun under the sun-located within minutes of thousands of acres of gorgeous recreation at national refuge areas and two scenic state parks.

HIGHER ED THAT GETS GRADS HIRED

Middle Georgia is home to six outstanding universities and five technical colleges including:

- Mercer University
- Middle Georgia State University
- Central Georgia Technical College
- Georgia College & State University
- Wesleyan College
- Fort Valley State University

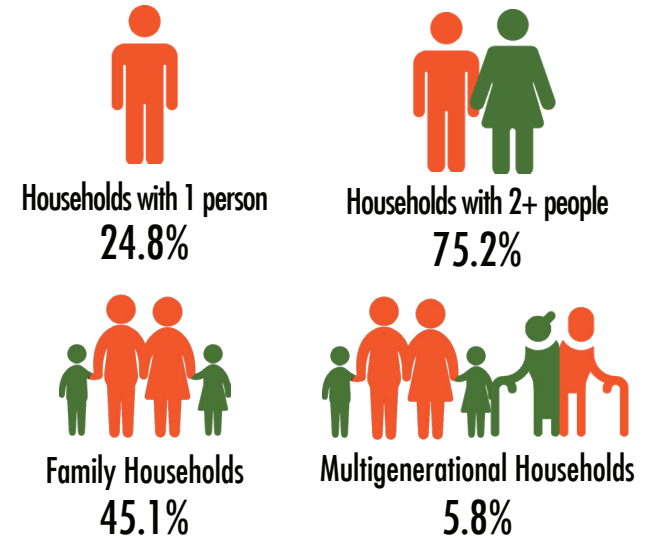
POPULATION BY MARTIAL STATUS = 22,934



2022 Total Daytime Population = 26,206



HOUSEHOLDS BY TYPE = 9,958



POPULATION BY EDUCATIONAL ATTAINMENT



HOUSEHOLD SUMMARY

